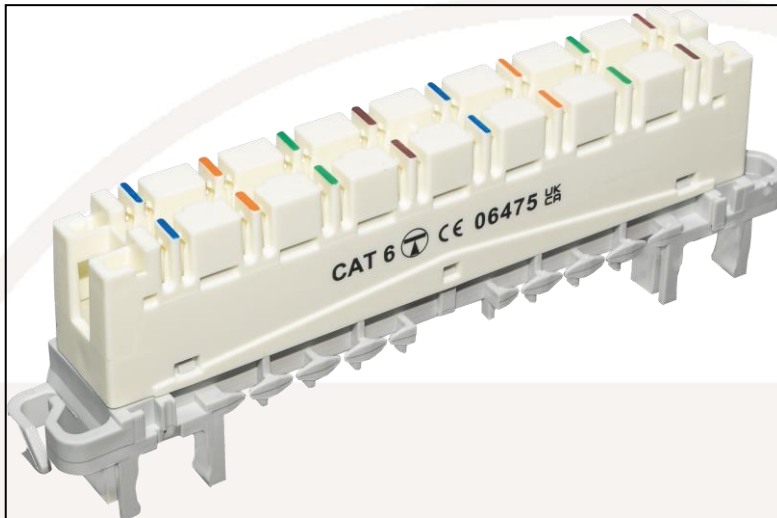


## **CONNECT6+ 8 Pair Consolidation Module**



### **CONNECT6+ 8 Pair Consolidation Module (S37):**

The CONNECT6+ is an 8 pair consolidation module suitable for use as part of a Category 6 consolidation point, using LSA+ type mounting frames or 95mm Profil-type rods. Each module can join 2 standard cables.

#### ***Features:***

- Fully compliant with Category 6 performance requirements for a consolidation point
- Fully compatible with industry standard back mount frames, 19" sub-racks, label holders, connection boxes and insertion tools
- Tried and tested industry standard LSA+ type contacts
- Suitable for use with POE+
- Disconnection facility allows lines to be disconnected temporarily for testing
- Silver-plated contacts maintain electrical performance even after re-termination

#### ***Specifications:***

- Net weight (box of 10, including packaging): 548 g
- Dimensions (box of 10, including packaging): 45 x 260 x 115 mm
- Colour: White housing with grey base

- **Materials:**
  - Housing: PBT (Flame retardancy satisfies UL94V-0)
  - Contacts: 20μ" / 0.508μm Silver-plated Phosphor Bronze
  - Copper conductor diameter: 0.40 to 0.65mm
  - Insulation resistance: ≥1GΩ
  - Contact resistance (in connection points): ≤ 10mΩ

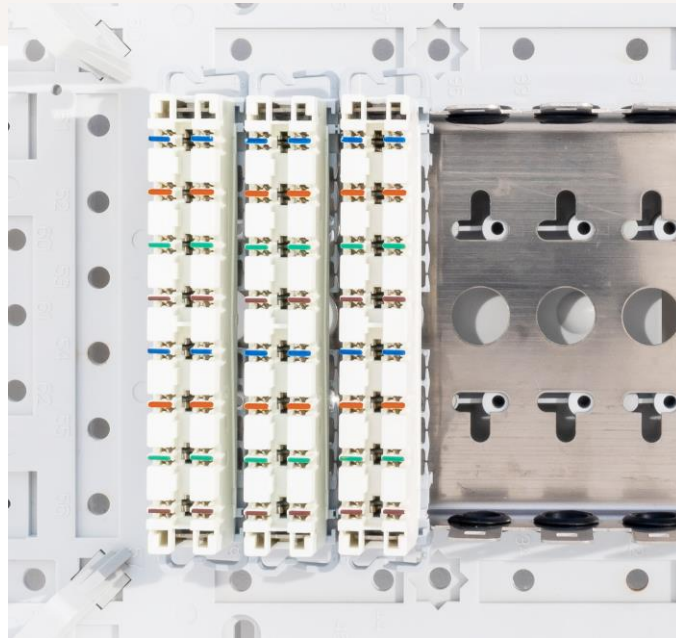
**Packaging:** Bagged in poly bags of 5's, then boxed in 10's and then in outer cartons of 100 pcs

**Commodity code:** 85369090

**EAN:** 5055386509895

**Country of Origin:** China

**Illustrative images:**



Example of installation in connection box



Example of sub-rack mounting

ROHS Compliant

**Code: S37**

