



Data & Server Enclosures

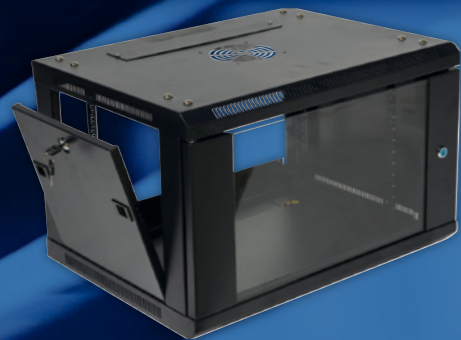
Data Enclosures • Server Enclosures
Wall Boxes • Small Office • Home Office

Online www.qube-enclosures.co.uk

Qube Enclosures

Qube Network Enclosures specialise in supplying 19" network and server enclosures. We offer solutions for any application ranging from small home offices to data centres.

We provide a next day service covering the UK through our distribution channel.



Wall Box

Available in 6U-18U high and 450, 550 & 600mm depths. Perfect for medium to large network installations. Supplied with a one man mounting bracket and a lockable glass front door and lockable/removable side panels.

Page 04

inCloset

The inCloset Rack has been designed to be fitted discretely into office furniture when space isn't available. Ideal for small home or office networks, the rack can be pulled out of the furniture and rotated 90°, allowing for easy access to equipment.

Page 18



SOHO Mini Cabinets

Ideal solution for small network installations. The SOHO Cabinets Small and light weight construction makes them suitable for positioning under desks, mounted onto walls or into small cupboards.

Page 05



Data & Server Cabinets

Available in various heights from 18U-47U, ranging from 600 x 600 to 800 x 1000, The range of QUBE Data & Server Enclosures makes them flexible enough for any sized network or data center installation.

Page 06

Acoustic Cabinets

Using state of art 34mm cladding QUBE Acoustic Cabinets reduce noise levels by up to 25dB. Ranging from our 6U 600mm deep Wall Box to the 47U 800 x 100mm Server Cabinet.

Page 10



Access 100

The Access 100 Rack provides all round easy access to hardware and networking equipment. The rotating base incorporates a set of vertical mounting posts allowing the rack to be pulled out of the enclosure and rotated 90°. The Complete rack can be set on rotate or just a section on the base.

Page 14

Wall Box

The Qube Wall box is a single section unit. Designed with flexibility and security in mind making it the ideal solution for small to medium data, AV or security applications. Supplied with an open back with the option of adding a solid steel back plate.

Key Features:

- 6, 9, 12, 15 & 18U High
- 600mm Wide
- 450, 550 and 600mm deep
- Black in colour (RAL9004)
- Toughened glass front door
- Removable and lockable front door and side panels
- One man installation hanging bracket
- Top and bottom cable entry
- Open rear design (Optional back plate available)
- Adjustable 19" vertical mounting profiles, front and rear
- U height markers on all four mounting profiles
- Pack of 50 cage nuts supplied
- All round earth bonding
- Optional vertical cable management



Delivery

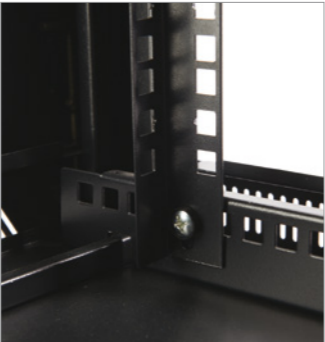
- Flat pack option
- Next day delivery to UK mainland



One Man Mounting Panel



Printed U Markers, Front & Rear



4 x Adjustable 19" Panel Mounts



Optional Vertical Cable Management

	6U		9U		12U		15U		18U	
	QU6450		QU9450		QU12450		QU15450		QU18450	
450mm	Height	Weight	Height	Weight	Height	Weight	Height	Weight	Height	Weight
	370mm	15kg	502mm	18kg	637mm	22kg	770mm	26kg	903mm	30kg
550mm	QU6550		QU9550		QU12550		QU15550		QU18550	
	Height	Weight	Height	Weight	Height	Weight	Height	Weight	Height	Weight
	370mm	15.7kg	502mm	18.7kg	637mm	22.7kg	770mm	26.7kg	903mm	30.7kg
600mm	QU6600		QU9600		QU12600		QU15600		QU18600	
	Height	Weight	Height	Weight	Height	Weight	Height	Weight	Height	Weight
	370mm	17kg	502mm	20kg	637mm	24kg	770mm	28kg	903mm	32kg

Soho Mini Cabinet

The Qube Soho Cabinet is the perfect solution for home or small office installations. Due to its compact size the Soho Mini Cabinet can be mounted onto a wall, on the floor or underneath a desk.

Key Features:

- 8U high
- W: 310 x D: 450mm
- Weight 9.4kg
- Black in colour (RAL9004)
- Toughened glass front door
- Removable and lockable front door
- Top and bottom cable entry
- Adjustable vertical mounting profiles
- 12 way mini patch panels, shelves, blanking panels and cable management available
- Removable side panels

Delivery

- Next day delivery to UK mainland

P/N	Description
QM8USOHO	8U Soho Mini Cabinet
QM12FC6PP	12 Way Cat 6 Mini Patch Panel
QMSHELF	1U Mini Shelf
QMBLANK	1U Mini Blank Plate
QMMAN	1U 3 Ringed Cable Management Bar



Low Profile Wall Box - 225mm Deep

The Qube Low Profile Wall Box has been designed for applications where space is limited. The Wall Box is only 225mm deep, great for space restricting installations.

Key Features:

- 4, 6, 9, 12 and 15U
- 225mm Deep
- Black in colour (RAL9004)
- Perspex front door
- Removable and lockable front door
- Top, bottom and side cable entry
- Adjustable 19" vertical mounting profiles

Delivery

- Next day delivery to UK mainland



P/N	Description	Weight	Height
QL4U	4U Low Profile Wall Box	8kg	240mm
QL6U	6U Low Profile Wall Box	9.2kg	330mm
QL9U	9U Low Profile Wall Box	11.2kg	463mm
QL12U	12U Low Profile Wall Box	13.1kg	596mm
QL15U	15U Low Profile Wall Box	15kg	730mm

DATA ENCLOSURE

The Qube Data Cabinet offers a fully secure enclosure. Supplied with lockable and removable side panels, a smoked glass front door, a solid steel door on the rear, both also lockable. Available in 600 & 800mm wide and 600 & 800mm deep footprints.

The Qube Data Cabinets are supplied with medium duty travel casters and jacking feet as standard.

Key Features:

- 18, 22, 27, 37, 42 and 47U
- 600 or 800mm wide
- 600 or 800mm deep
- Black in colour (RAL9004)
- 800kg static load capacity
- Smoked glass front and steel rear doors
- 800mm wide fitted with vertical enclosed jumper rings
- Adjustable 19" vertical mounting profiles, front and rear
- U height markers on all four mounting profiles
- Swing handle cam lock on the front door
- Lockable and removable side panels
- Transport castors and jacking feet fitted
- Multiple cable entry on roof and base
- Pack of 50 cage nuts supplied
- All round earth bonding
- Optional doors can be fitted - vented mesh, wardrobe or steel

Delivery

- Flat pack option
- Next day delivery to UK mainland



SERVER ENCLOSURE

The Qube Server Cabinet is based on 600 x 1000mm & 800 x 1000mm footprints to accommodate larger servers, UPS's and other deep hardware. Supplied with lockable vented mesh front and rear doors to allow for maximum airflow within the enclosure. Both side panels are also lockable and removable to ensure security and ease of access for the user.

The Qube Server Cabinets are supplied with medium duty travel casters and jacking feet as standard.

Key Features:

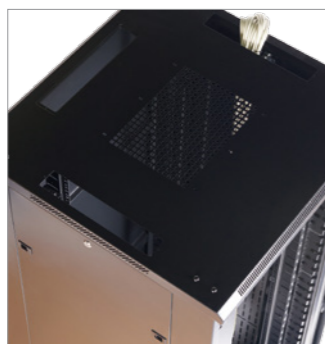
- 27, 37, 42 and 47U
- 600 or 800mm wide
- 1000mm deep
- Black in colour (RAL9004)
- 800kg static load capacity
- Mesh front and rear doors
- 800mm wide fitted with vertical enclosed jumper rings
- Adjustable 19" vertical mounting profiles, front and rear
- U height markers on all four mounting profiles
- Swing handle cam lock on the front door
- Lockable and removable side panels
- Transport castors and jacking feet fitted
- Multiple cable entry on roof and base
- Pack of 50 cage nuts supplied
- All round earth bonding
- Optional doors can be fitted - glass, wardrobe or steel

Delivery

- Flat pack option
- Next day delivery to UK mainland



Multiple Base Cable Entry



Multiple Roof Cable Entry



800 Wide Units Fitted with Vertical Jumper Rings, with a Hinged Door



Printed U Markers



Adjustable Profiles



Fitted with Feet & Castors



Quick Release Doors



Swing Handle Cam Lock

Data Enclosures

P/N	600mm Wide Data Cabinets	Weight	Height inc Castors
QU1866	18U 600 x 600 Data Cabinet - Glass Front, Steel Rear	58kg	988mm
QU2266	22U 600 x 600 Data Cabinet - Glass Front, Steel Rear	62kg	1166mm
QU2268	22U 600 x 800 Data Cabinet - Glass Front, Steel Rear	67kg	1166mm
QU2766	27U 600 x 600 Data Cabinet - Glass Front, Steel Rear	66kg	1389mm
QU2768	27U 600 X 800 Data Cabinet - Glass Front, Steel Rear	73kg	1389mm
QU3766	37U 600 X 600 Data Cabinet - Glass Front, Steel Rear	76kg	1834mm
QU3768	37U 600 X 800 Data Cabinet - Glass Front, Steel Rear	85kg	1834mm
QU4266	42U 600 X 600 Data Cabinet - Glass Front, Steel Rear	82kg	2056mm
QU4268	42U 600 X 800 Data Cabinet - Glass Front, Steel Rear	91kg	2056mm
QU4766	47U 600 X 600 Data Cabinet - Glass Front, Steel Rear	88kg	2278mm
QU4768	47U 600 X 800 Data Cabinet - Glass Front, Steel Rear	102kg	2278mm
800mm Wide Data Cabinets			
QU2786	27U 800 X 600 Data Cabinet - Glass Front, Steel Rear	81kg	1389mm
QU2788	27U 800 X 800 Data Cabinet - Glass Front, Steel Rear	86kg	1389mm
QU3786	37U 800 X 600 Data Cabinet - Glass Front, Steel Rear	99kg	1834mm
QU3788	37U 800 X 800 Data Cabinet - Glass Front, Steel Rear	103kg	1834mm
QU4286	42U 800 X 600 Data Cabinet - Glass Front, Steel Rear	108kg	2056mm
QU4288	42U 800 X 800 Data Cabinet - Glass Front, Steel Rear	110kg	2056mm
QU4786	47U 800 X 600 Data Cabinet - Glass Front, Steel Rear	120kg	2278mm
QU4788	47U 800 X 800 Data Cabinet - Glass Front, Steel Rear	123kg	2278mm

Server Enclosures

P/N	600mm Wide Server Cabinets	Weight	Height inc Castors
QU2761	27U 600 x 1000 Server Cabinet - Mesh Front, Mesh Rear	77kg	1389mm
QU4261	42U 600 x 1000 Server Cabinet - Mesh Front, Mesh Rear	97kg	2056mm
QU4761	47U 600 x 1000 Server Cabinet - Mesh Front, Mesh Rear	106kg	2278mm
800mm Wide Server Cabinets			
QU2781	27U 800 x 1000 Server Cabinet - Mesh Front, Mesh Rear	97kg	1389mm
QU3781	37U 800 x 1000 Server Cabinet - Mesh Front, Mesh Rear	108kg	1834mm
QU4281	42U 800 x 1000 Server Cabinet - Mesh Front, Mesh Rear	117kg	2056mm
QU4781	47U 800 x 1000 Server Cabinet - Mesh Front, Mesh Rear	137kg	2278mm



www.avatrav.com



Audio Visual & Telecoms Rotation Rack

The AVATR Racking System from QUBE Network Enclosures provides the perfect solution for today's home audio visual installations. Designed with flexibility for the installer and end user in mind, we have produced the best AV Rack on the market.

View online for more information on the new AVATR AV Rack.

The Qube Acoustic Wall Boxes and Floor Cabinets have been designed to offer the best sound proof enclosures possible. Using state of the art 34mm thick cladding, comprised of absorbent Class 0 fire resistant acoustic foam laminates applied to both sides of a heavy layer sound barrier membrane. Using this level of cladding allows us to reduce noise levels by up to 25dB.

Combining a high surface mass with flexible physical characteristics, the product offers optimum acoustic performance.

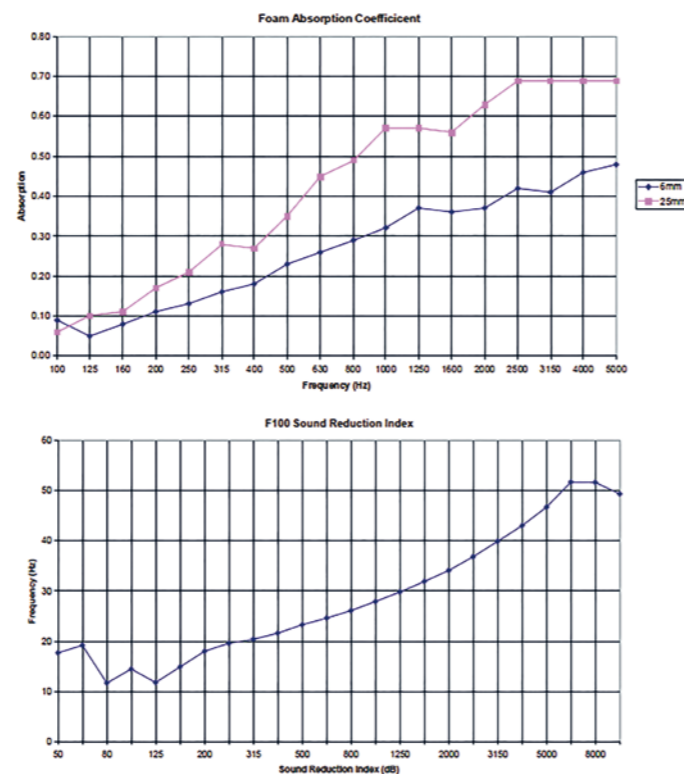
The Class 0 fire rating means that the Qube Acoustic range is ideal for demanding applications such as marine and automotive industries.

Delivery

5-7 days delivery to UK mainland



Acoustic Performance



34mm Thick, Class 0 Fire resistant Acoustic Foam



Acoustic Wall Box

The Qube Acoustic Wall Box is the ideal solution for small to medium sized data installations. Commonly installed in locations such as small open plan offices or communal areas. Our 34mm thick state of the art Class 0 acoustic foam is effective enough to reduce the noise levels of noisy equipment such as network switches and other fan based active devices by 25dB.

Available in 6, 9, 12, 15 & 18U high and 600mm deep allowing the Qube Acoustic Wall Boxes to accommodate most of today's hardware such as network switches, UPS devices and small servers.

Key Features:

- Capable of up to 25dB noise reduction
- 34mm thick foam cladding
- Class 0 fire resistant foam
- Fan unit fitted, with a low noise option
- 6, 9, 12, 15 & 18U high
- 600 wide x 600 deep
- Removable & lockable solid steel front door
- Adjustable 19" vertical mounting profiles, front & rear
- U height markers on all four vertical mounting profiles
- Solid steel lockable front door
- Removable & lockable side panels
- Top & bottom cable entry
- One man install hanging bracket
- All round earth bonding
- Black in colour (RAL9004)



Acoustic Floor Cabinet

Qube Acoustic Floor Cabinets are the perfect solution for larger networking installations. Available in 22, 27, 37, 42 & 47U high. Fully cladded with our state of the art 34mm Class 0 acoustic foam providing up to 25dB noise reduction when noisy active equipment needs to be silenced.

The range is available in various footprints to cater for most of today's installation environments, where larger network switches, UPS devices and servers are required.

Key Features:

- Capable of up to 25dB noise reduction
- 34mm thick foam cladding
- Class 0 fire resistant foam
- Fan unit fitted, with a low noise option
- 22, 27, 37, 42 & 47U high
- Footprints - 600 x 600, 600 x 800, 600 x 1000mm
800 x 600, 800 x 800, 800 x 1000mm
- 800kg static load capacity
- 800 wide cabs fitted with vertical jumper rings (enclosed)
- Adjustable 19" vertical mounting profiles, front & rear
- U height markers on all four vertical mounting profiles
- Transport castors & jacking feet fitted
- Solid steel lockable front & rear doors
- Removable & lockable side panels
- Top & bottom cable entry
- All round earth bonding
- Black in colour (RAL9004)



Acoustic Wall Box



All Round Access



Printed U Vertical Markers



Dual Roof Mounted Fan Units



Solid Steel Back Plate



Cable Entry Gland Plates



Removable & Lockable Side Panels



Adjustable Vertical Mounting Profiles



One Man Install Mounting Bracket

Acoustic Floor Cabinet



Removable & Lockable Side Panels



Cable Entry Gland Plates



Adjustable Vertical Mounting Profiles



Fitted Roof Mounted Fan Tray



Multiple Roof Cable Entry



Enclosed Vertical Jumper Rings



All Round Access



Multiple Base Cable Entry

Acoustic Wall Boxes

P/N	Description	Weight	Height
QU6600/AC	6U 600mm Deep Acoustic Wall Box	28.2kg	370mm
QU9600/AC	9U 600mm Deep Acoustic Wall Box	33.8kg	502mm
QU12600/AC	12U 600mm Deep Acoustic Wall Box	39kg	637mm
QU15600/AC	15U 600mm Deep Acoustic Wall Box	45.8kg	770mm
QU18600/AC	18U 600mm Deep Acoustic Wall Box	52kg	903mm

Acoustic Floor Cabinets

P/N	600mm Wide Acoustic Cabinets	Weight	Height
QU2266/AC	22U 600 x 600 Acoustic Floor Cabinet	86kg	1166mm
QU2268/AC	22U 600 x 800 Acoustic Floor Cabinet	97kg	1166mm
QU2766/AC	27U 600 x 600 Acoustic Floor Cabinet	95kg	1389mm
QU2768/AC	27U 600 X 800 Acoustic Floor Cabinet	112kg	1389mm
QU2761/AC	27U 600 X 1000 Acoustic Floor Cabinet	121kg	1389mm
QU3766/AC	37U 600 X 600 Acoustic Floor Cabinet	113.9kg	1834mm
QU3768/AC	37U 600 X 800 Acoustic Floor Cabinet	126.7kg	1834mm
QU4266/AC	42U 600 X 600 Acoustic Floor Cabinet	123.4kg	2056mm
QU4268/AC	42U 600 X 800 Acoustic Floor Cabinet	134.4kg	2056mm
QU4261/AC	42U 600 X 1000 Acoustic Floor Cabinet	150.18kg	2056mm
QU4761/AC	47U 600 X 1000 Acoustic Floor Cabinet	162.4kg	2278mm

P/N	800mm Wide Acoustic Cabinets	Weight	Height
QU2786/AC	27U 800 X 600 Acoustic Floor Cabinet	120kg	1389mm
QU2788/AC	27U 800 X 800 Acoustic Floor Cabinet	131kg	1389mm
QU2781/AC	27U 800 X 1000 Acoustic Floor Cabinet	153kg	1389mm
QU3786/AC	37U 800 X 600 Acoustic Floor Cabinet	140.7kg	1834mm
QU3788/AC	37U 800 X 800 Acoustic Floor Cabinet	149.8kg	1834mm
QU3781/AC	37U 800 X 1000 Acoustic Floor Cabinet	160.9kg	1834mm
QU4286/AC	42U 800 X 600 Acoustic Floor Cabinet	156.2kg	2056mm
QU4288/AC	42U 800 X 800 Acoustic Floor Cabinet	160.7kg	2056mm
QU4281/AC	42U 800 X 1000 Acoustic Floor Cabinet	180.5kg	2056mm
QU4781/AC	47U 800 X 1000 Acoustic Floor Cabinet	206.8kg	2278mm

ACCESS 100

The Qube Access 100 Rack has been designed and engineered allowing the user to install networking equipment inside of a secure 19" enclosure.

Based around our standard Qube enclosure incorporating a specially designed rotating base unit along with its own set of vertical mounting posts. This gives the user the ability to pull the rack out of the enclosure and rotate to a maximum of 90° allowing easy access.

The rotating base section is fitted with 4 vertical mounting posts and its own cable management system, which allows for smooth integration with the main enclosure.

Qube Access 100 Racks are manufactured to the customers desired configuration. The customer has the option of having all usable U space of the rack set on rotate, or a section of the top with fixed vertical posts (as per a conventional rack) and a specified number of U space set to rotate from the base.

Example: A 27U Rack (which only has 25U usable space) can be configured to allow the top 15U vertical posts to be fixed and the bottom 10U rotatable, or the top 20U to be fixed and the bottom 5U rotatable.

Access 100 Racks are fitted with a stabilising plinth as standard and offer the option of being fitted with glass, vented mesh, wardrobe or solid steel doors.



A Stabilising stand is available to provide additional stability and support the extended base from stress, when extensive work is being carried out

Key Features:

- Pulls out & rotates 45° & 90°
- Locks in place once rotated
- Extends to 560mm out of the rack
- Rotation base load capacity up to 113kg (250lb)
- 20, 25, 35, 40, & 45U usable Space
- 600 & 800mm wide
- 800 & 1000mm deep
- 800kg total static load capacity
- Removable & lockable side panels
- Lockable glass front & solid steel rear doors (800mm deep)
- Lockable mesh front & rear doors (1000mm deep)
- 800 wide cabs fitted with vertical jumper rings (enclosed)
- 19" vertical mounting profiles, front & rear
- U height markers on all vertical mounting profiles
- Stabilising plinth fitted
- On-site integration
- Top & bottom cable entry
- All round earth bonding
- Glass, wardrobe, vented mesh & solid steel door options
- Black in colour (RAL9004)

Delivery

- Flat pack option
- 1-2 days delivery to UK mainland

Access 100 Options

Access 100 Racks are available in the following heights:

- 22U (20U of usable space)
- 27U (25U of usable space)
- 37U (35U of usable space)
- 42U (40U of usable space)
- 47U (45U of usable space)

Complete rack on rotate

If regular access to networking equipment is required then the user can have the complete rack set on rotate.

The sliding base is locked in place with a removable front plate. Once removed the base & frame can be pulled out of the rack up to 560mm, rotated and locked at either 45° or 90°. This provides the user with complete and easy access to installed equipment.

Mix between fixed & rotate

With the Access 100 Rack, the user has the option of having the rack mixed with fixed vertical posts (as they are on our standard cabinets) and a section on the base set to rotate.

The user can decide how much of the rack is split between fixed and vertical rotating posts.

A minimum of 5U on the base must be set to rotate, with a specified number of U space fixed above.

A common configuration would be to install patch panels, cable management and network switches on the top section of the cabinet, with hardware that would require regular access on the bottom rotating section.



All 25U on rotate



10U fixed, 15U on rotate



Access 100 Rack Features



2 Way Fan Unit



Side Mounted Selves



Various Cable Management

Access 100 Rack Features



Fitted Stabilising Plinth



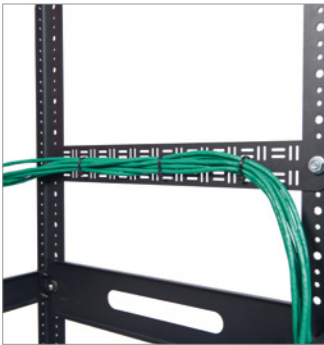
Optional Stabilising Stand



Internal Cable Management



on-site integration



Side Management Bars



Removable Front Plate



Numbered U Markers



4x Heavy Duty Sliding Rails

Access 100 Racks - 600mm Wide Series

P/N	Description	Usable Depth on Rotate Section	Weight	Height inc Plinth
QU2268/A100	22U 600 x 800 Access 100 Rack (20 Usable U Space)	495mm	97.66kg	1166mm
QU2768/A100	27U 600 X 800 Access 100 Rack (25 Usable U Space)	495mm	103.66kg	1389mm
QU2761/A100	27U 600 X 1000 Access 100 Rack (25 Usable U Space)	495mm	107.66kg	1389mm
QU3768/A100	37U 600 X 800 Access 100 Rack (35 Usable U Space)	495mm	115.66kg	1834mm
QU4268/A100	42U 600 X 800 Access 100 Rack (40 Usable U Space)	495mm	121.66kg	2056mm
QU4261/A100	42U 600 X 1000 Access 100 Rack (40 Usable U Space)	495mm	127.66kg	2056mm
QU4768/A100	47U 600 X 800 Access 100 Rack (45 Usable U Space)	495mm	132.66kg	2278mm
QU4761/A100	47U 600 X 1000 Access 100 Rack (45 Usable U Space)	495mm	136.66kg	2278mm

Access 100 Racks - 800mm Wide Series

P/N	Description	Usable Depth on Rotate Section	Weight	Height inc Plinth
QU2788/A100	27U 800 X 800 Access 100 Rack (25 Usable U Space)	495mm	116.66kg	1389mm
QU2781/A100	27U 800 X 1000 Access 100 Rack (25 Usable U Space)	495mm	119.65kg	1389mm
QU3788/A100	37U 800 X 800 Access 100 Rack (35 Usable U Space)	495mm	125.65kg	1834mm
QU3781/A100	37U 800 X 1000 Access 100 Rack (35 Usable U Space)	495mm	130.65kg	1834mm
QU4288/A100	42U 800 X 800 Access 100 Rack (40 Usable U Space)	495mm	132.65kg	2056mm
QU4281/A100	42U 800 X 1000 Access 100 Rack (40 Usable U Space)	495mm	139.65kg	2056mm
QU4788/A100	47U 800 X 800 Access 100 Rack (45 Usable U Space)	495mm	145.65kg	2278mm
QU4781/A100	47U 800 X 1000 Access 100 Rack (45 Usable U Space)	495mm	159.65kg	2278mm

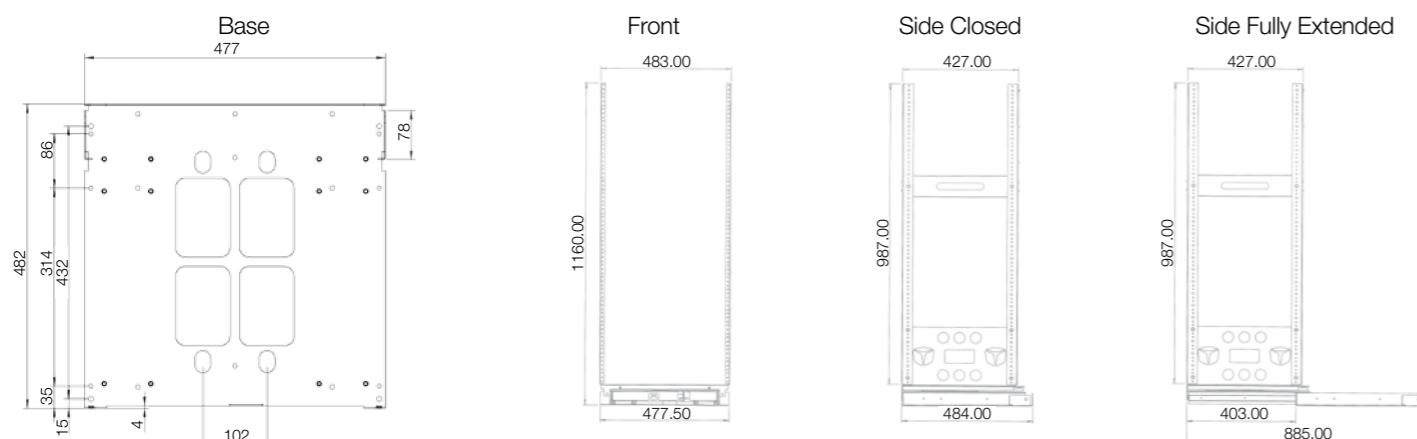
The Qube inCloset Rack has been designed to fit inside office or home furniture, allowing for installation of networking equipment. When installed, the rotating base can be pulled out, rotated & locked on either 45° or 90°. This provides quick and easy access to installed equipment.

The inCloset base plate is mounted onto a 2 sliding rail system, which carries a maximum load of 57kg (125lb) and can be extended 460mm out of the furniture.

The base mounting plate can be removed, allowing for on-site integration.

Key Features:

- Pulls out & rotates
- Extends to 460mm
- Locks on full extension
- Locks on 45° & 90°
- Locks on closed position
- Available in 6, 9 & 12U high
- 480mm x 480mm footprint
- Can be integrated into office or home furniture
- Can be positioned into false walls
- Slide off & on base plate, allowing for on-site integration
- Longer vertical post available
- 57kg Maximum load bearing on 2 rails



The Qube inWall Rack system has been designed to allow installations inside of false walls, providing a neat and visually pleasant presentation. When installed, the rotating base can be pulled out, rotated & locked on either 45° or 90°. This provides quick and easy access to installed equipment.

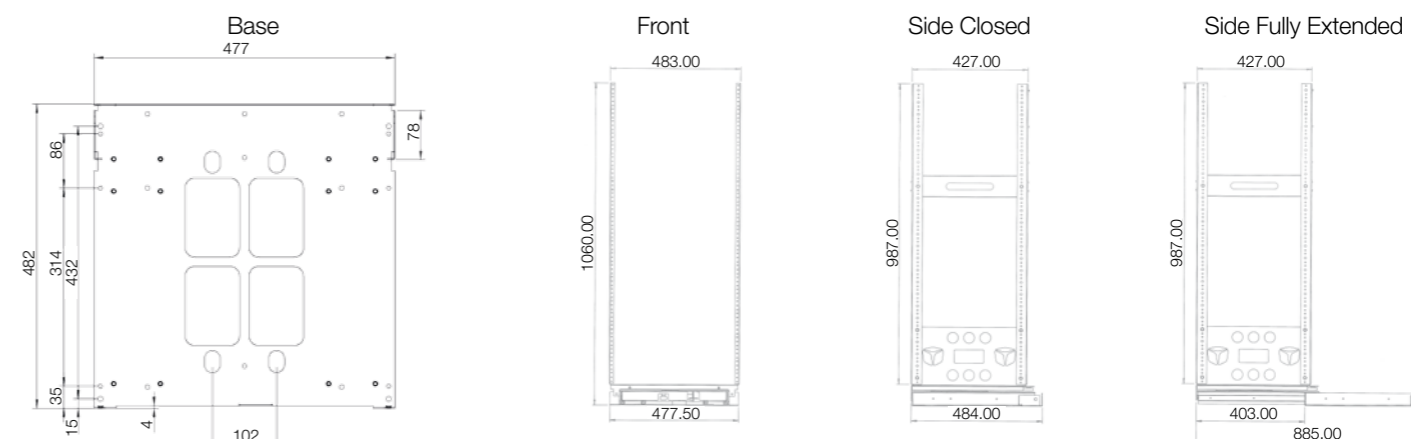
The inWall base unit is mounted onto a 4 sliding rail system, which carries a maximum load of 113kg (250lb).

The sliding rails on the inWall fully extend to 460mm. If a longer extension is required, then a 560mm extension is available.

The frame can be removed from the base, allowing for on-site integration.

Key Features:

- Pulls out & rotates
- 460mm Extension (560mm available)
- Locks on full extension
- Locks on 45° & 90°
- Locks on closed position
- Available in 18, 22, 27, 37 & 42U high
- 480mm x 485mm footprint
- Can be integrated into office or home furniture
- Can be positioned into false walls
- Slide off & on base plate, allowing for on-site integration
- 113kg (250lb) Maximum load bearing on 4 rails



inCloset & inWall Features



Locks at 45° & 90°



Easy Access



On-site integration



Rear Cable Management



Side Cable Management



Removable front plate

Access 100, inCloset & inWall Accessories



2 Way Fan Unit



Side Mounting Shelves



Sliding Shelf



Side Cable Management Bar



Cable Management Bars



Brushed Management Panel



Stabilising Stand



Side Fixing Bolts

inCloset

P/N	Description	Usable Depth on Rotate Section	Weight	Height
QU6/460/iC	6U inCloset 460 Rack with 4 Rails - 460mm Extension	495mm	22.21kg	348mm
QU9/460/iC	9U inCloset 460 Rack with 4 Rails - 460mm Extension	495mm	22.82kg	482mm
QU12/460/iC	12U inCloset 460 Rack with 4 Rails - 460mm Extension	495mm	23.45kg	615mm
QUCLOSET	Deluxe Desk End Cupboard (Walnut, Beech, Maple, Oak, White)	W: 800mm x D: 600mm x H: 725mm		

inWall

P/N	Description	Usable Depth on Rotate Section	Weight	Height
QU18/460/iW	18U inWall 460 Rack with 4 Rails - 460mm Extension	495mm	24.61kg	882mm
QU22/460/iW	22U inWall 460 Rack with 4 Rails - 460mm Extension	495mm	25.41kg	1060mm
QU27/460/iW	27U inWall 460 Rack with 4 Rails - 460mm Extension	495mm	26.41kg	1282mm
QU37/460/iW	37U inWall 460 Rack with 4 Rails - 460mm Extension	495mm	28.41kg	1727mm
QU40/460/iW	40U inWall 460 Rack with 4 Rails - 460mm Extension	495mm	29.01kg	1860mm

Accessories (Access 100, inCloset & inWall)

P/N	Description
Shelves	
QUSMS1	inRange/Access 100 1U Side Mounted Vented Shelf 150mm
QUSMS3	inRange/Access 100 3U Side Mounted Vented Shelf 355mm
QUSS6	inRange/Access 100 1U Sliding Vented Shelf
Cable Management	
QUSMB	inRange/Access 100 Side Management Bar
QUMB0	inRange/Access 100 Management Bar (Pack of 4)
QUMB2	inRange/Access 100 Management Bar - 2inch Legs (Pack of 4)
QUMB4	inRange/Access 100 Management Bar - 4inch Legs (Pack of 4)
QUCBB	inRange/Access 100 1U Brushed Panel with Management - Powder Coated
Fan Unit	
QUFANLN	inRange/Access 100 2U 2 Way Low Noise Fan - Brushed Anodized Aluminium
Side Fixing Bolts	
QUSB10	inRange/Access 100 Countersunk Side Bolts & Nuts (Pack of 10)
Stabilising Stand	
QUSTAB	inRange/Access 100 Stabilising Stand

Qube Door Options

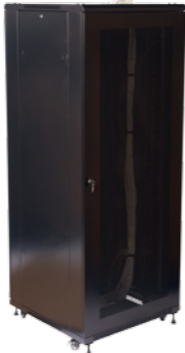
The following doors can be fitted to any Qube Enclosure upon request (excluding selected heights).



Double Wardrobe



Solid Steel



Vented Mesh

Qube Accessories

Various cabinet accessories are available



Standard Plinths



Stabilising Plinths



Single Wall Box Fan Unit



Roof Mounted Fan Trays



Fixed Shelves



Sliding Shelves



Adjustable Shelves



Cable Management



Brushed Cable Entry Gland Plates



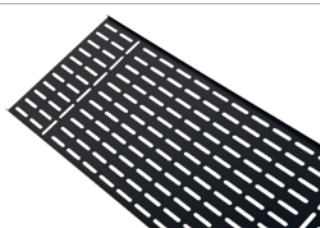
Wall Box Vertical Cable Management



Lockable Rack Drawers



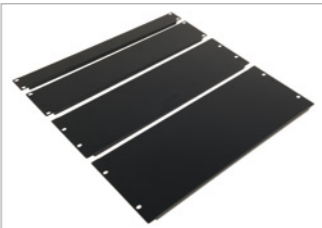
Baying Kits



Cable Trays



Heavy Duty Casters



Blanking Plates



Power Distribution

Plinths

P/N	Description	Dimensions
QUP66	Plinth 600mm x 600mm	600 x 600 x 150
QUP68	Plinth 600mm x 800mm	600 x 800 x 150
QUP86	Plinth 800mm x 600mm	800 x 600 x 150
QUP88	Plinth 800mm x 800mm	800 x 800 x 150
QUP61	Plinth 600mm x 1000mm	600 x 1000 x 150
QUP81	Plinth 800mm x 1000mm	800 x 1000 x 150
QUPS8	Stabilising Plinth 800mm Deep	800 x 95
QUPS1	Stabilising Plinth 1000mm Deep	1000 x 95

Fan Units

P/N	Description
QURMF1	Single Roof Mount Wall Box Fan Unit
QURMF2	2 Way Roof Mount Fan Unit
QURMF4	4 Way Roof Mount Fan Unit

Shelves

P/N	Description
QUMS2	1U Modem Shelf 250mm
QUMS3	2U Modem Shelf 350mm
QUFS6	Fixed Vented shelf for 600mm
QUFS8	Fixed Vented shelf for 800mm
QUFS1	Fixed Vented shelf for 1000mm
QUHD6	Heavy Duty Fixed Vented shelf for 600mm
QUHD8	Heavy Duty Fixed Vented shelf for 800mm
QUHD1	Heavy Duty Fixed Vented shelf for 1000mm
QUSS6	Sliding Vented Shelf for 600mm
QUSS8	Sliding Vented Shelf for 800mm
QUSS1	Sliding Vented Shelf for 1000mm
QUKS6	1U 19" Keyboard Shelf for 600mm
QUKS8	1U 19" Keyboard Shelf for 800mm
QUKS1	1U 19" Keyboard Shelf for 1000mm
QUADS1	Adjustable Shelf 600mm-1200mm
QUSR6	Support Rail for 600mm (for Sliding & Keyboard Shelf)
QUSR8	Support Rail for 800mm (for Sliding & Keyboard Shelf)
QUSR1	Support Rail for 1000mm (for Sliding & Keyboard Shelf)

UK Switched Power Distribution Units

P/N	Description
H13A/4/**	Horizontal UK 4-Way to ** Plug
H13A/5/**	Horizontal UK 5-Way to ** Plug
H13A/6/**	Horizontal UK 6-Way to ** Plug
V13A/4/**	Vertical UK 4-Way to ** Plug
V13A/5/**	Vertical UK 5-Way to ** Plug

Cable Management

P/N	Description
QUCM4	1U 19" Cable Management Panel with Rings
QUCBB	1U 19" Cable Management Brush Panel
QUCBR	1U 19" Cable Management Brush Panel with Rings
QUBRG/WB	Brushed Cable Entry Gland Plate (for Wall Boxes)
QUBRG/FC	Brushed Cable Entry Gland Plate (for Floor Cabinets)
QUWBM	6U Vertical Cable Management with Jumper Rings & Brush (Set of 2) (for Wall Boxes)
QUCMC/42	42U Cable Management Channel with Jumper Rings & Hinged Door

Rack Drawers

P/N	Description
AVRD2	2U Rack Drawer
AVRD3	3U Rack Drawer
AVRD4	4U Rack Drawer

Blanking Plates

P/N	Description
QU1UBP	1U 19" Blank Panel
QU2UBP	2U 19" Blank Panel
QU3UBP	3U 19" Blank Panel
QU4UBP	4U 19" Blank Panel

Cable Trays

P/N	Description
QUCT18	18U Cable Tray 150mm
QUCT22	22U Cable Tray 150mm
QUCT27	27U Cable Tray 150mm
QUCT37	37U Cable Tray 150mm
QUCT42	42U Cable Tray 150mm
QUCT47	47U Cable Tray 150mm

Miscellaneous

P/N	Description
QUHDC	Set of 4 Heavy Duty Castors with Brakes
QULOCK	Cabinet Lock
QUEBK	Earth Bonding Kit
QUBAY	Baying kit - set of 4 Brackets
QUCNK	M6 Nuts & Screws (bag of 50)

P/N	Description
V13A/6/**	Vertical UK 6-Way to ** Plug
V13A/8/**	Vertical UK 8-Way to ** Plug
V13A/10/**	Vertical UK 10-Way to ** Plug
V13A/12/**	Vertical UK 12-Way to ** Plug
V13A/16/**	Vertical UK 16-Way to ** Plug



Distributed by

Email **info@qube-enclosures.co.uk**
Online **www.qube-enclosures.co.uk**

Qube Network Enclosures are produced
by Midas Enterprise Group.

